

DHUMAT 400 T4 0,75kW F400 (245400181)

GENERAL DATA



SMOKE EXTRACTION BACKWARD CASING FAN 400°C/2h

MANUFACTURING FEATURES

CASING:

- Made of galvanized steel sheet with connection flanges and inspection door.
- Changeable panels.

MOTOR SUPPORT:

- Galvanised steel plate, motor with flanges fixed on 2 supports. Removable plate / support / impeller set.

IMPELLER:

- Backward centrifugal impeller, made of galvanised steel, dynamically balanced and self-cleaning.
- Direct drive on the motor shaft.

MOTOR:

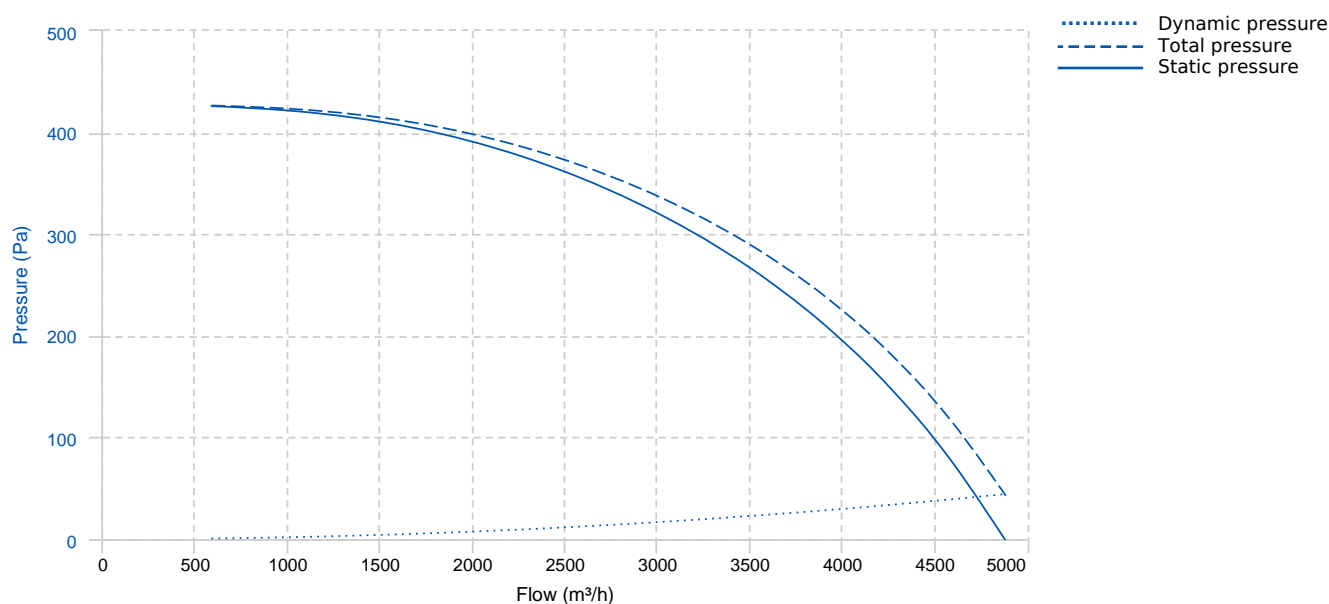
- Three phase motor with IP-55 protection and F class insulation. Manufactured with standard voltages for one speed motors: 230/400V 50Hz up to 4 Kw and 400/690V 50Hz for higher powers of 4 and 6 poles. 2 speed motors: Dahlander. 400V 50Hz

APPLICATIONS

- Smoke extraction in tertiary buildings IGH and ERP.
- Ventilation and smoke exhaust in covered car parks.
- Ventilation in technical, industrial or commercial facilities, kitchens.
- Maximum continuous working temperature: carried air 110°C, environment 60°C.

Official homologation by the European laboratory APPLUS according to EN 12101-3:2015 Certification Nr: 0370-CPR-2681

PERFORMANCE CURVE

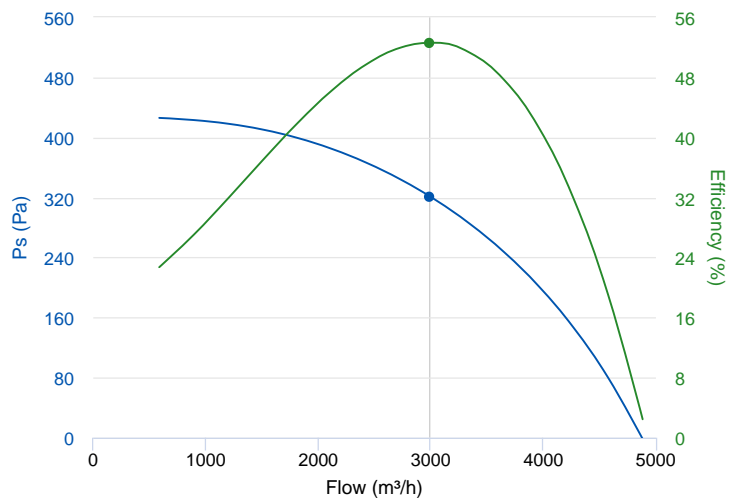


TECHNICAL DATA

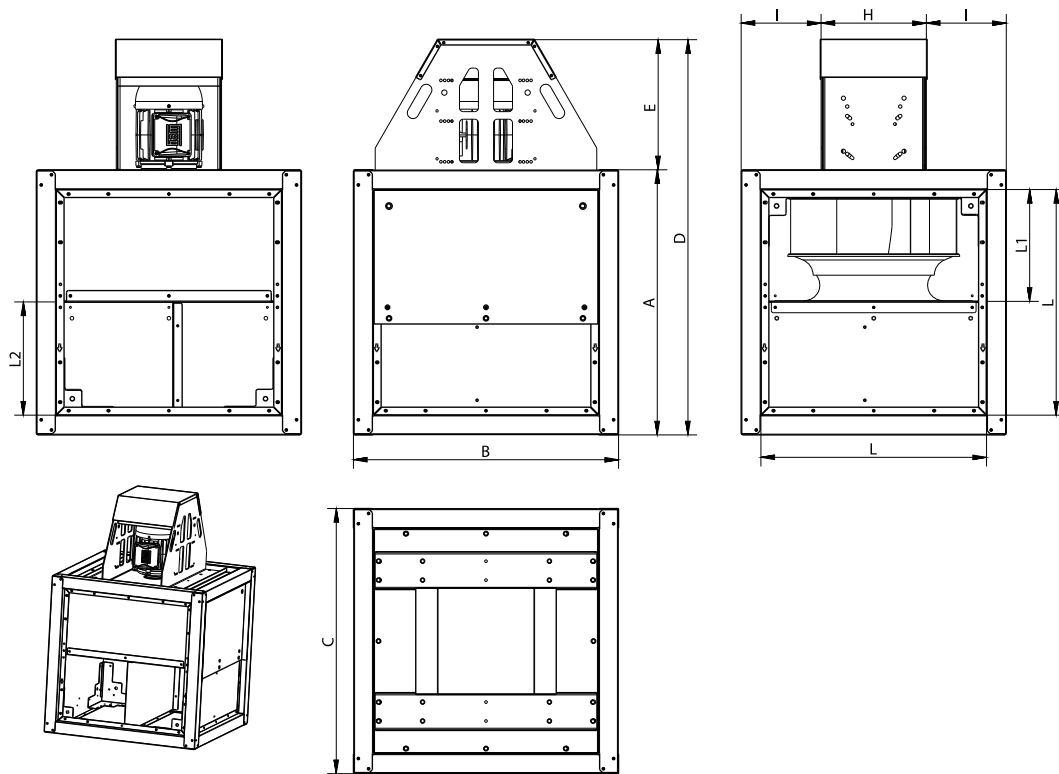
Fan							
RPM	1410	Approx. weight	84 kg	Max. Flow	4890 m ³ /h		
Motor							
Power	0,75 kW	RPM	1410	I max. (230V)	2,83 A	I max. (400V)	1,63 A
Size	80	Approx. weight	15 kg	Efficiency (%)	82.5 %	FP	0.81

ERP DATA

Fan data sheet		
Fan type	Unit for non-residential ventilation (LOT 6)	
Typology	Unidirectional	
reports.other	None	
Type of driver	None	
Motor power (kW)	0.75	
	Fan values	ERP Requirements 2018
Max. efficiency (%)	52.63	38.12
Effic. Heat recovery (%)	-	
Pabs (kW)	0.535	
Flow (m ³ /h)	2994.39	
Static pressure (Pa)	321.25	
Speed (m/s)	5.28	
SFP (W/m ³ /s)	642.97	



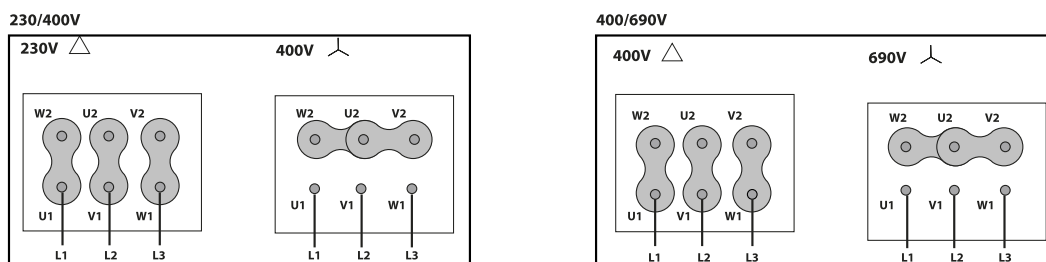
DIMENSIONS



Dimensions (mm)

A	700	B	700	C	700	D	1043,5	E	343,5
H	278	I	211	K	26	L	595,7	L1	264,9
L2	329,6								

WIRING DIAGRAM



ACCESSORIES



SAFETY SWITCH
INT 25 3P A
REF: INT253PA



SAFETY SWITCH FOR 400°C/2h
INT 400 25A 3P
REF: 508902501



OUTLET FLANGE FOR DHUMAT
EI DHUMAT 400
REF: 965400111



DHUMAT FEET KIT
DKF 400-450
REF: 245409201



OUTDOOR FLANGE WITH BIRD GUARD FOR
DHUMAT
VIS DHUMAT 400-450
REF: 965400001



FREQUENCY SPEED CONTROLLER
SFC 230 I 4,2A *
REF: SFC230I004



FREQUENCY SPEED CONTROLLER
SFC 400 III 2,2A *
REF: SFC400III2

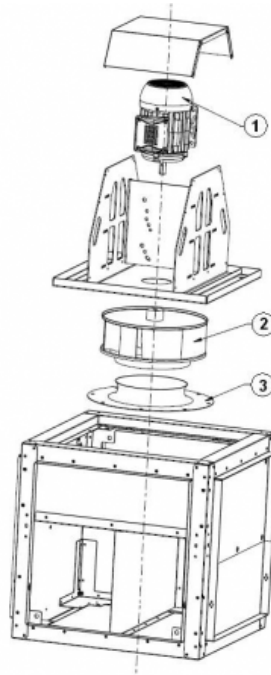


ANTI-VIBRATION RUBBER BLOCK
AVR (GENERIC)



ANTI-VIBRATION SPRING BLOCK
AVS (GENERIC)

SPARE PARTS



	Code	Model	Qty
1	721001143	MOTOR 0,75kW T4 B3 230/400V	x1
2	R-279409381	IMPELLER THRE R63B1 400X140x19 RD	x1



	Code	Model	Qty
3	R-279401680	INLET CONE ED11 400	x1